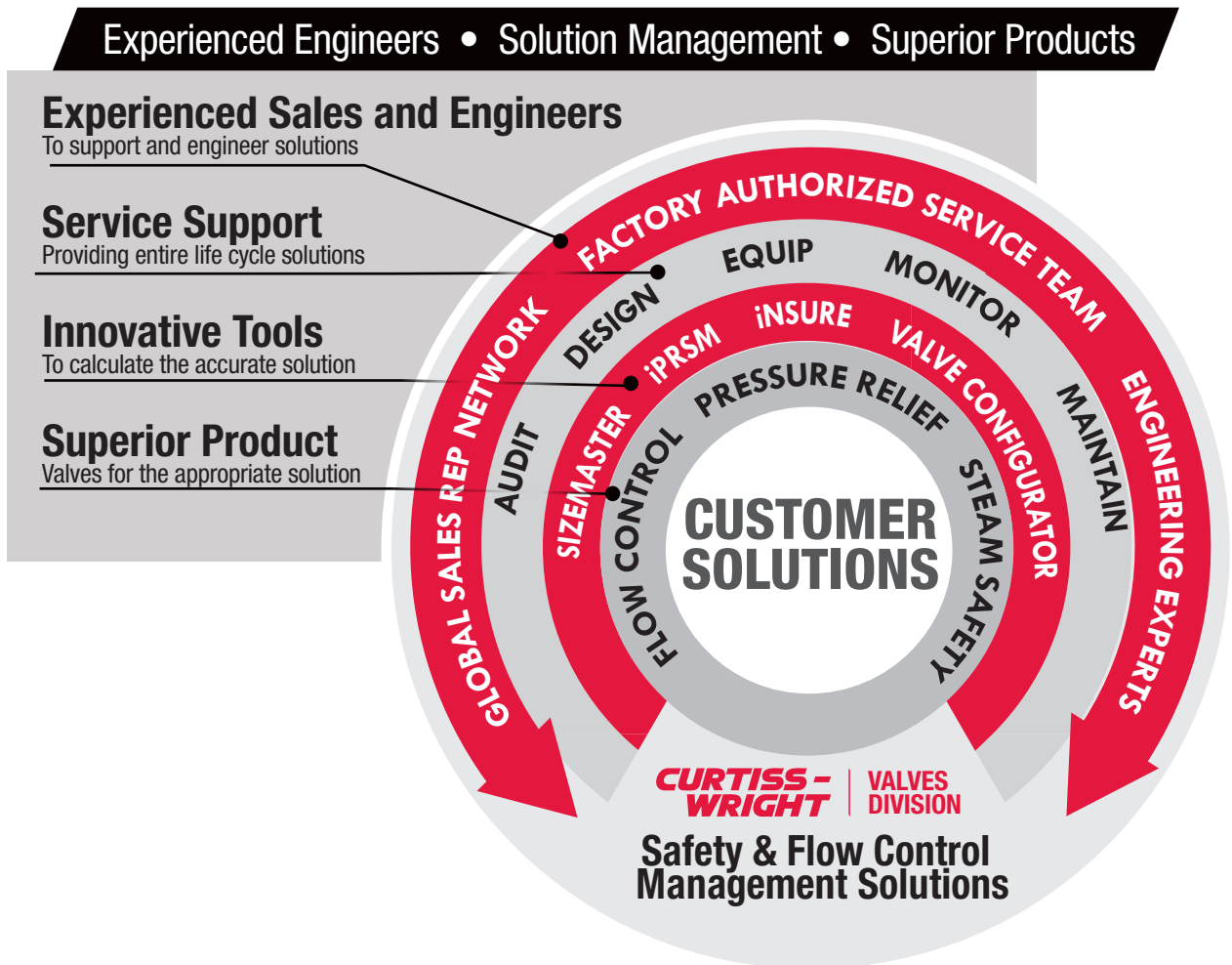




# Safety and Flow Control Management Solutions

## Focused On Customer Solutions

**Our Commitment:** Provide customers with total pressure and flow control management solutions transforming and ensuring plant function and safety.



### Factory Authorized Service Team and Sales Representative Network

- Factory trained technicians in OEM specifications
- Local service and in-line testing reducing maintenance cost.
- Capability to track and manage relief valve maintenance and repair history
- Access to Sales network, and keeping global inventory local



<https://www.cw-valvegroup.com/Contact/Distributors>

# Solutions Management and Innovative Tools

## VALVE SIZING AND SELECTION SOFTWARE



- Provides sizing for vapor, liquid, steam and two-phase flow
- Capable of multi scenario sizing. Multi-valve algorithm to easily size from multiple valves
- Built-in catalog selector ensures the proper product appropriate based on pressure and temperature
- Compliant with ASME and API

### Control Valve CONFIGURATOR

- Capable of multi scenario sizing. Multi-valve algorithm to easily size from multiple valves
- Develop, dimensional drawings
- Maintain project data
- Generate orders to be sent direct to production

## SYSTEM MANAGEMENT SOFTWARE



### Software Capabilities

- Overpressure analysis with relief load calculations
- Inlet and outlet piping hydraulic calculations
- Header blowdown and knockout drum calculations
- Acoustic induced vibration analysis



- Real time Monitoring for pressure relief valves
- Communicates critical performance data
- Locally store data for retrieval and analysis
- Bluetooth options for mobile field communication

## TRAINING



We offer technical training courses learning about valve management and industry scenarios.

### SOME AVAILABLE CLASSES

- Pressure relief valve functionality
- Sizing requirements
- Material selection
- Sizing software training
- Maintenance and repair
- Mitigating overpressure scenarios

**CONTACT: Your Sales Rep For More Information**

**PRESSURE RELIEF**

**2600, 2700, 3800**



**2600/2600L Series**

Versatile and Customizable Spring Loaded Pressure Relief Valve

Product Description		
<b>Pressure Range:</b>	15 PSIG to 10,000 PSIG	(1.03 to 689) BARG
<b>Temperature Range:</b>	-450°F to +1500°F	-267.8°C to 815.6°C
<b>Size Range:</b>	1" x 2" to 20" x 24"	25 x 51 mm to 508 x 610 mm
<b>Materials:</b>	Carbon Steel, Stainless Steel, Monel, and Hastelloy C	
<b>ASME Certification:</b>	UV and V	
<b>Service:</b>	Steam/Water/Air	



**2700 Series**

Customizable Spring Loaded Pressure Relief Valve with a Compact Design

Product Description		
<b>Pressure Range:</b>	15 PSIG to 16,000 PSIG	(1.03 to 1103) BARG
<b>Temperature Range:</b>	-450°F to +750°F	-267.8°C to 398.9°C
<b>Size Range:</b>	1/2" x 1" to 1-1/2" x 2-1/2"	13 x 25.4 mm to 38 x 63.5 mm
<b>Materials:</b>	Carbon Steel, Stainless Steel, Monel, and Hastelloy C	
<b>ASME Certification:</b>	UV	
<b>Service:</b>	Steam/Water/Air	



**3800/3800L Series**

Pilot Operated Relief Valve with Snap Acting or Modulating Control

Product Description		
<b>Pressure Range:</b>	15 PSIG to 10,000 PSIG	(1.03 to 689) BARG
<b>Temperature Range:</b>	-450°F to +500°F	-267.8°C to 260°C
<b>Size Range:</b>	1" x 2" to 12" x 16"	25 x 51mm to 305 x 406 mm
<b>Materials:</b>	Carbon Steel, Stainless Steel, Monel, and Hastelloy C	
<b>ASME Certification:</b>	UV	
<b>Service:</b>	Steam/Water/Air	

## 2400 Series

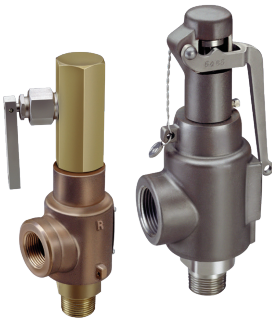
### High Performance Direct Spring Loaded Pressure Relief Valve



Product Description		
<b>Pressure Range:</b>	20 PSIG to 2,000 PSIG	(1.37 to 137.8) BARG
<b>Temperature Range:</b>	-450°F to +550°F	-267.8°C to 287.8°C
<b>Size Range:</b>	1/2" x 3/4" to 1" x 1"	13 x 19 mm to 25 x 25 mm
<b>Materials:</b>	Carbon Steel, Stainless Steel, and Brass/Bronze	
<b>ASME Certification:</b>	UV	
<b>Service:</b>	Air	

## 1890/1896 Series

### Low Pressure Spring Loaded Pressure Relief Valves



Product Description		
<b>Pressure Range:</b>	15 PSIG to 800PSIG	(1.03 to 55.1) BARG
<b>Temperature Range:</b>	-20°F to +750°F	-28.4°C to 398.8°C
<b>Size Range:</b>	1/2" x 3/4" to 3/4" x 1"	13 x 19 mm to 19 x 25 mm
<b>Materials:</b>	Carbon Steel, Stainless Steel, and Brass/Bronze	
<b>ASME Certification:</b>	UV	
<b>Service:</b>	Steam/Water/Air	

## 4200 Series

### Spring Loaded Pressure Relief Valve for Section I Steam Applications



Product Description		
<b>Pressure Range:</b>	15 PSIG to 1,480 PSIG	(1.03 to 102) BARG
<b>Temperature Range:</b>	-20°F to +1000°F	-28.9°C to 537.8°C
<b>Size Range:</b>	1-1/4" x 1-1/2" to 6" x 8"	32 x 38 mm to 152 x 203 mm
<b>Materials:</b>	Carbon Steel, Stainless Steel, and Chrome-Moly	
<b>ASME Certification:</b>	UV and V	
<b>Service:</b>	Steam/Air	

## 6400 Series

### Spring Loaded Pressure Relief Valve For Section I Steam Applications



Product Description		
<b>Pressure Range:</b>	15 PSIG to 2,900 PSIG	(1.03 to 200) BARG
<b>Temperature Range:</b>	-20°F to +1000°F	-28.9°C to 537.8°C
<b>Size Range:</b>	1" x 2" to 4" x 6"	25 x 51 mm to 102 x 152 mm
<b>Materials:</b>	Carbon Steel, Stainless Steel, and Chrome-Moly	
<b>ASME Certification:</b>	UV and V	
<b>Service:</b>	Steam/Air	

**CONTROL VALVES**

**Sliding Stem and Rotary**



**300 Series**

**Sliding Stem Control Valves - Models 320 / 360 / 370 / 380 / 390**

Product Description		
<b>Size Range:</b>	1/2" to 16" NPS	(15mm to 400mm DN)
<b>Temperature Range:</b>	-325°F to +1000°F	(-198°C to +538°C)
<b>Pressure Range:</b>	ASME B16.34 Class 150 to 2500	
<b>Shutoff Range:</b>	ANSI/FCI 70.2 and IEC 60534-4 Class II to VI	
<b>End Connections:</b>	RF • RTJ • BWE • SWE • FNPT	
<b>Body Styles:</b>	Globe and Angle	
<b>Plug Types:</b>	Balanced and Unbalanced	
<b>Characteristics:</b>	Equal Percentage • Linear • Quick Opening	



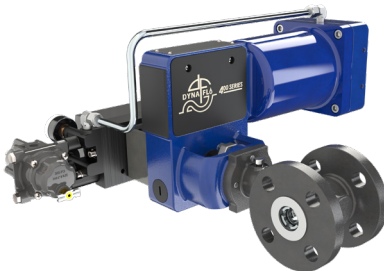
**500 Series**

**Rotary Control Valves - Models 570 / 571 / 573 / 590**

Product Description		
<b>Size Range:</b>	1" to 16" NPS	(25mm to 400mm DN)
<b>Temperature Range:</b>	-50°F to +800°F	(-46°C to +427°C)
<b>Pressure Range:</b>	ASME B16.34 Class 150 to 900	
<b>Shutoff Range:</b>	ANSI/FCI 70.2 and IEC 60534-4 Class II • IV • VI	
<b>Body Styles:</b>	Wafer and Flanged	
<b>Characteristics:</b>	Modified Equal Percentage	

**400 Series**

**Eccentric Rotary Plug Control Valves - Model DF400**



Product Description		
<b>Size Range:</b>	1" to 6" NPS	(25mm to 150mm DN)
<b>Temperature Range:</b>	-320°F to +750°F	(-196°C to +399°C)
<b>Pressure Range:</b>	ASME B16.34 Class 150 to 300	
<b>Shutoff Range:</b>	ANSI/FCI 70.2 and IEC 60534-4 Class II to VI	
<b>Body Styles:</b>	Flanged	
<b>Characteristics:</b>	Linear	
<b>Actuator Options:</b>	Exclusive Integral Actuator	

# Linear and Rotary Valves

# CONTROL VALVES



## Integral Sliding Stem Valve and Actuator

Models DF100 / DF234 / DF270 / DF2410

Product Description		
Body Size Range:	1" and 2" NPS	(25mm and 50mm DN)
Port Size Range:	1/4" to 1-1/4"	(6.4mm to 38.1mm)
Temperature Range:	-50°F to +300°F	(-46°C to +150°C)
Pressure Range:	ASME B16.34 Class 150 to 1500	
Shutoff Range:	ANSI/FCI 70.2 and IEC 60534-4 Class IV	
End Connections:	RF • RTJ • FNPT	
Plug Types:	Unbalanced	

## Actuators

Pneumatic Linear / Pneumatic Rotary



Product Description		
Temperature Range:	-40°F to +180°F	(-40°C to +82°C)
Pneumatic Linear Spring and Diaphragm - Model DFC / DFO		
DFC Input Signals:	0-18 • 0-33 PSIG	(0-1.24 • 0-2.28 BARG)
DFO Input Signals:	3-15 • 6-30 PSIG	(0.21-1.03 • 0.41-2.07 BARG)
Yoke Sizes:	2-1/8" • 2-13/16" • 3-9/16"	(54mm • 71mm • 90mm)
Travel Range:	3/8" to 4"	(9.5mm to 102mm)
Valve Stem Compatibility:	3/8" • 1/2" • 3/4"	(9.5mm • 12.7mm • 19.1mm)
Pneumatic Linear Piston - Model DFLP		
Operating Pressures:	20 PSIG to 150 PSIG	(1.38 BARG to 10.3 BARG)
Yoke Sizes:	3-9/16" • 5"	(91mm • 127mm)
Travel Range:	3/4" to 8-1/8"	(19.1mm to 206mm)
Valve Stem Compatibility:	3/4" • 1" • 1-1/4"	(19.1mm • 25.4mm • 31.8mm)
Pneumatic Rotary Spring and Diaphragm - Model DFR		
Input Signal:	0-18 • 0-33 • 3-27 PSIG	(0-1.24 • 0-2.28 • 0.21-1.86 BARG)
Valve Shaft Compatibility:	1/2" to 2"	(12.7mm to 50.8mm)
Pneumatic Rotary Piston - Model DFRP		
Operating Pressures:	20 PSIG to 150 PSIG	(1.38 BARG to 10.3 BARG)
Valve Shaft Compatibility:	1/2" to 2-1/2"	(12.7mm to 63.5mm)



## Warranty

All Products have a Warranty Period of twelve months from first installation or eighteen months from delivery, whichever is sooner. All other warranty terms are as per Curtiss-Wright Industrial Standard Terms and Conditions, a copy which is available at [www.cw-industrialgroup.com/About/Group-Policies/Terms-Conditions.aspx](http://www.cw-industrialgroup.com/About/Group-Policies/Terms-Conditions.aspx) or contact your local representative.

**Curtiss-Wright Corporation** (NYSE: CW) has a long history with its roots dating back to Orville and Wilbur Wright's first flight in 1903, and Mr. Glenn Curtiss, the father of naval aviation. In 1929, the companies founded by these three great aviation pioneers, the Curtiss Aeroplane and Motor Company and Wright Aeronautical Corporation, merged to form the largest aircraft company at the time, Curtiss-Wright Corporation.

We have continued on the path of innovation and advanced engineering, and have applied that expertise to a number of critical applications in high-performance markets. Our success has resulted in a world-renowned reputation for performance, long-standing customer relationships and significant growth.

Today, we are a global, integrated provider of highly engineered, technologically advanced products and services. Our revenues are generated by providing our critical solutions through three segments: Aerospace & Industrial, Defense Electronics and Naval & Power, which support several of the largest, most vital industries in the world.



### Curtiss-Wright, Valves Division

**Headquarters:** 10195 Brecksville Road, Brecksville, OH 44141 USA • Telephone: 440-838-7690 • [www.cw-valvegroup.com/farris](http://www.cw-valvegroup.com/farris)

**Offices Worldwide:** For a listing of our global sales network, visit our website at [www.cw-valvegroup.com/farrisdistributors](http://www.cw-valvegroup.com/farrisdistributors).

While this information is presented in good faith and believed to be accurate, Curtiss-Wright Corporation, Valve Division does not guarantee satisfactory results from reliance on such information. Nothing contained herein is to be construed as a warranty or guarantee, expressed or implied, regarding the performance, merchantability, fitness or any other matter with respect to the products, nor as a recommendation to use any product or process in conflict with any patent. Curtiss-Wright Corporation, Farris Engineering reserves the right, without notice, to alter or improve the designs or specifications of the products described herein.